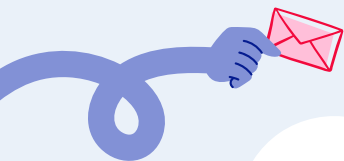


TPE trade union election

Domestic Employees and the Sector of Childminders
Employed by Domestic Employers



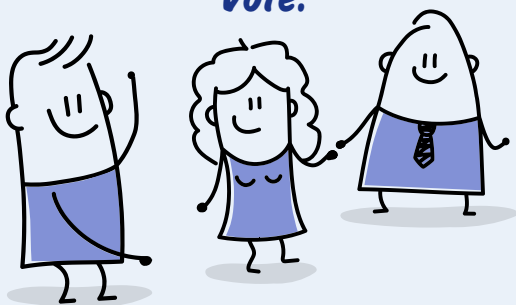
AND YOU,
WHO HELPS
YOU?

FROM 25 NOVEMBER

TO 9 DECEMBER 2024

Electing your trade union representative means
you give yourself the means to better protect your
job and improve your working conditions.

Vote!



WHY VOTE FOR A TRADE UNION?

BE REPRESENTED ✂

Trade unions negotiate national agreements (pension scheme, health insurance, unemployment insurance, etc.) and your collective bargaining agreement, which has a direct impact on your working conditions (working hours, pay, leave, etc.).

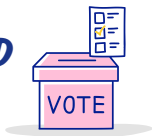
GET ADVICE

Trade unions listen to you, give you information and answer your questions about working conditions, pay and working hours.

BE DEFENDED

The industrial tribunal advisers appointed by the trade union are by your side to defend your interests in the event of a dispute with your employer about the performance and termination of the employment contract.

CONDITIONS REQUIRED TO VOTE



BE AGED 16+ ON 25 NOVEMBER 2024

with an ongoing employment contract in December 2023.

BE A HOME HELP WORKER OR A MATERNAL ASSISTANT

and have not been the subject of a ban, forfeiture or incapacity in your civic rights, regardless of your nationality.

Update on social progress

What trade unions do

Your salary

SALARIES ABOVE THE MINIMUM

from the first level of the pay scale

3% minimum above the minimum wage for home help workers

7% minimum above the legal minimum for maternal assistants

8th PAY INCREASE

in 2 years for employees in the sector

Significant increase in the **INDEMNITY FOR WITHDRAWAL** of a child

Salary increased

by **10%** for ordinary public holidays worked and

100% for 1 May



Your leave



ADDITIONAL LEAVE

granted, in particular for a family event (death of a family member, citizenship, etc.)



Your welfare cover/retirement



ENHANCED WELFARE COVER

in the event of death, disability, illness, etc.

INDEMNITY

for voluntary retirement

Your leisure activities

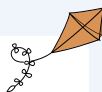


PREFERENTIAL RATES

up to **50%** off amusement parks

up to **40%** off your cinema tickets

up to **60%** off your holidays



WHO TO VOTE FOR?

This election is organised by the Ministry of Labour.

You are not voting for a candidate, but for a trade union.

You can read the candidate trade union programmes on the website dedicated to the election from your personal space:
election-tpe.travail.gouv.fr



HOW TO VOTE FROM 25 NOVEMBER 2024?



BY POSTAL VOTE

by sending your ballot paper in the pre-paid envelope received by post.



ON THE INTERNET

on the dedicated website election-tpe.travail.gouv.fr with the identification codes sent to you by post.

To download this brochure in another language, scan the QR code or visit the France Emploi Domicile website:

Vote

LET'S VOTE



VOTAÇÃO

VOTA

Do you have a question?
We have the answers

www.franceemploi.domicile.fr



FRANCE
EMPLOI
DOMICILE